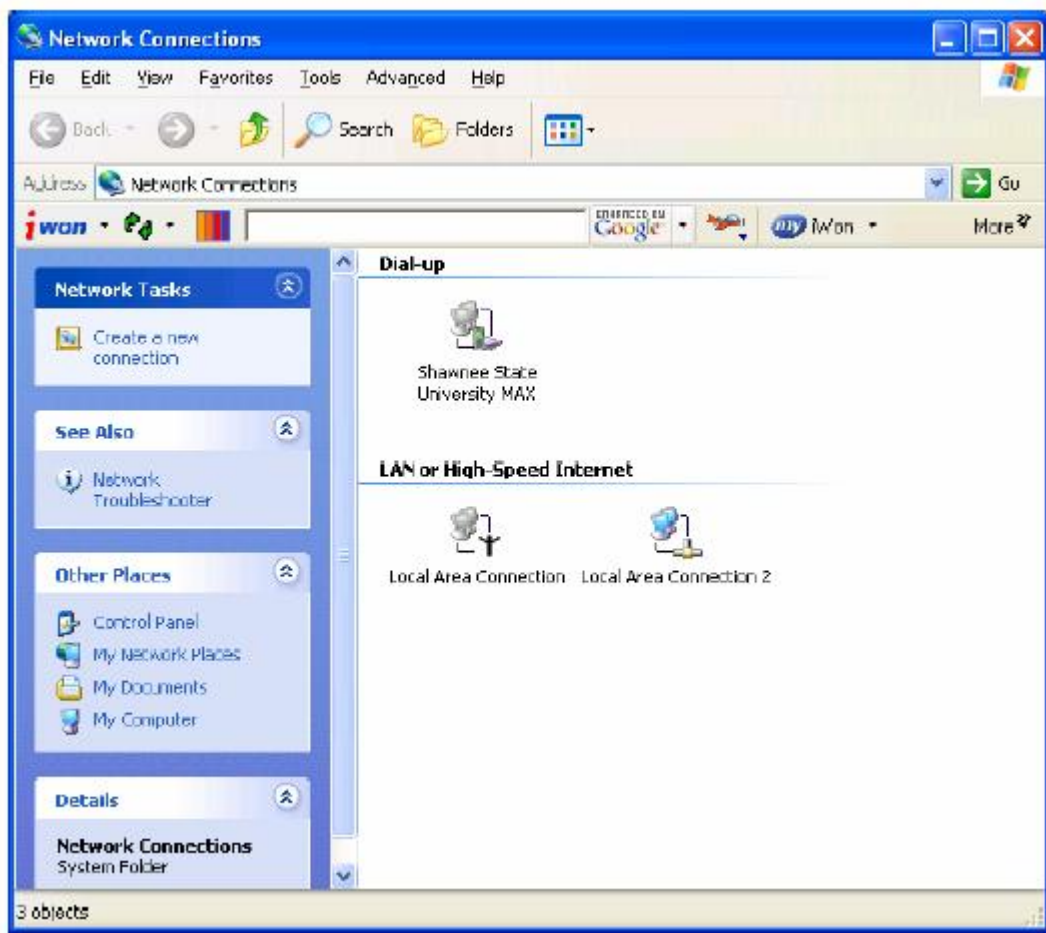


Etex

Dial Up Instructions for Windows XP

The following instructions are intended to be a guide to assist you in setting up a Dial Up Network connection on your personal computer. The instructions are based on the standard Windows XP operating system. If changes have been made to your operating system or the operating system is not installed correctly you may run into screens that differ from these instructions.

1. From your desktop, click on START button, move mouse cursor over the CONNECT TO and click once on SHOW ALL CONNECTIONS. A window similar to the one below should open up.

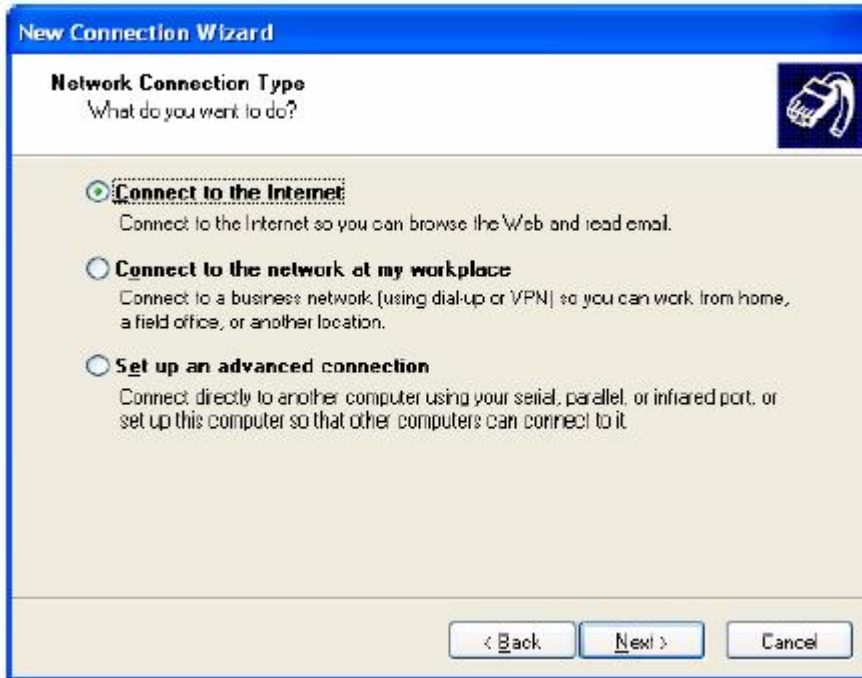


2. On this screen, click on CREATE A NEW CONNECTION. This will open the New Connection Wizard that will walk you through creating the Dial Up connection.

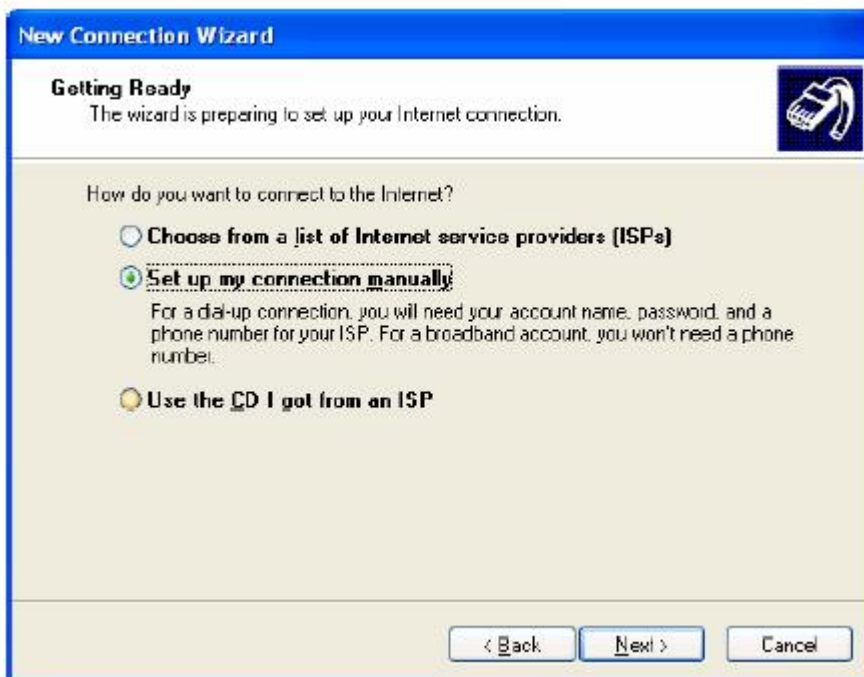
3. The first screen of this wizard simply contains information of what the wizard will help you with. Simply click NEXT.



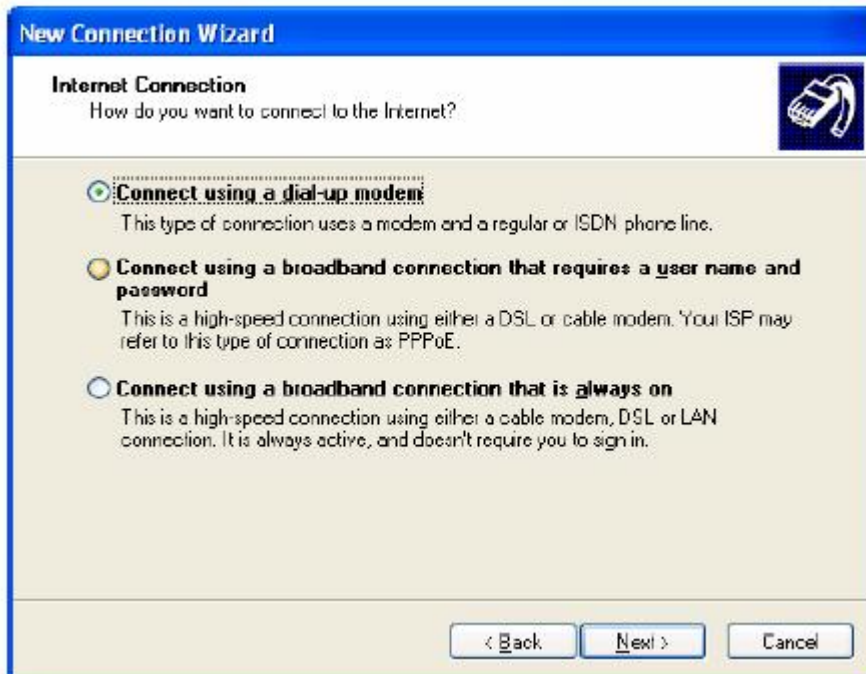
4. On the next window, you are asked to select the Network Connection Type. You will want to select the radial button next CONNECT TO THE INTERNET and click NEXT.



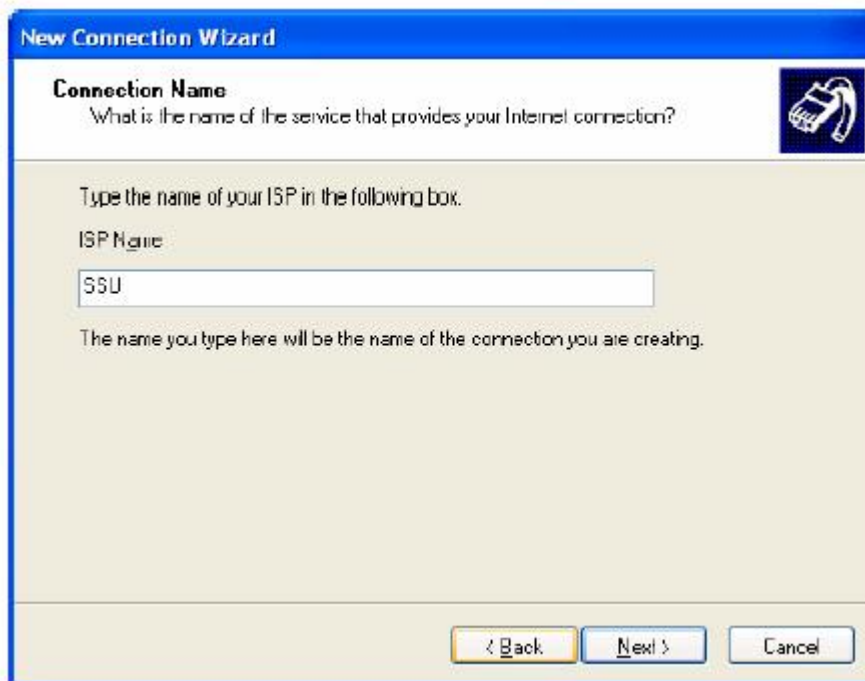
5. You will need to select SET UP MY CONNECTION MANUALLY from the next wizard screen. After selecting this option please click NEXT.



6. The window that is displayed next will ask, "How do you want to connect to the Internet?" Select the first radial button CONNECT USING A DIAL-UP MODEM. Then click NEXT.

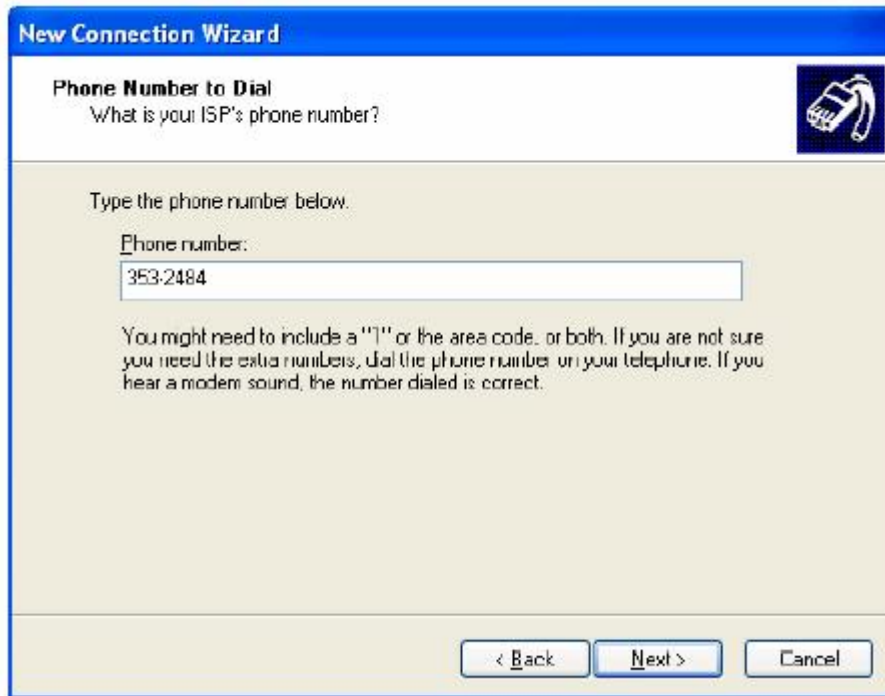


7. Now you must provide a name for your Dial Up connection. Just for easy reference Etex should be used. For the screen shots that follow, we will be using Etex. Enter the name in the space provided and click NEXT.



8. On the next screen you will enter the phone number in the space provided. Use and local number for your exchange 903-797-3839, 903-734-3839, 903-762-

3839,903-755-3839,903-755-3839,903-725-3839,903-777-3839.After entering the phone number please click NEXT.



New Connection Wizard

Phone Number to Dial
What is your ISP's phone number?

Type the phone number below.

Phone number:
353.2484

You might need to include a "" or the area code, or both. If you are not sure you need the extra numbers, dial the phone number on your telephone. If you hear a modem sound, the number dialed is correct.

< Back Next > Cancel

9. The Connection Availability screen is the next screen. This screen is useful if you have accounts established on your computer. For the screen shots provided we have picked ANYONE'S USE. After making your selection please click NEXT.



New Connection Wizard

Connection Availability
You can make the new connection available to any user or only to yourself.

A connection that is created for your use only is saved in your user account and is not available unless you are logged on.

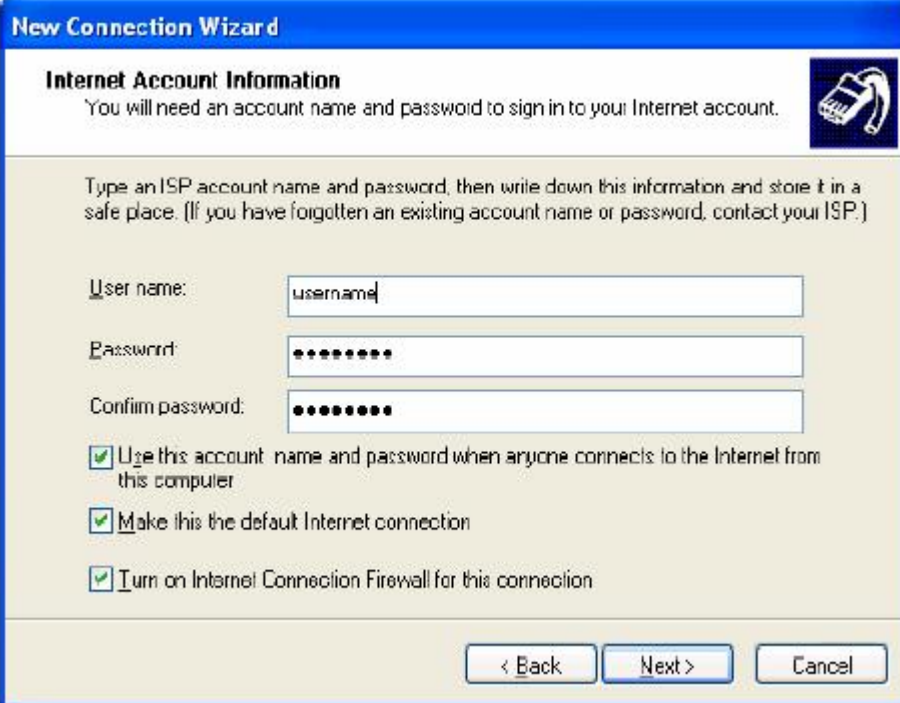
Create this connection for:

Anyone's use

My use only

< Back Next > Cancel

10. On the Internet Account Information screen please enter your username and password. This information can be found on the form provided to you by the Etex office. The options at the bottom of this window are options that you may or may not select and will be user's preference. The selections made will be the most common. After entering the information and selecting your preferences, click NEXT.



The image shows a screenshot of a Windows XP-style dialog box titled "New Connection Wizard". The current step is "Internet Account Information", which includes a sub-header and a small icon of a computer with a network cable. The main text instructs the user to enter an ISP account name and password. Below this, there are three input fields: "User name:" with the text "username" entered, "Password:" with ten dots, and "Confirm password:" with ten dots. At the bottom, there are three checked checkboxes: "Use this account name and password when anyone connects to the Internet from this computer", "Make this the default Internet connection", and "Turn on Internet Connection Firewall for this connection". At the very bottom, there are three buttons: "< Back", "Next >", and "Cancel".

New Connection Wizard

Internet Account Information
You will need an account name and password to sign in to your Internet account.

Type an ISP account name and password, then write down this information and store it in a safe place. (If you have forgotten an existing account name or password, contact your ISP.)

User name:

Password:

Confirm password:

Use this account name and password when anyone connects to the Internet from this computer

Make this the default Internet connection

Turn on Internet Connection Firewall for this connection

< Back Next > Cancel

11. The last window of the wizard appears. This window provides information for the connection you just created. It is suggested that you select the ADD A SHORTCUT TO THIS CONNECTION TO MY DESKTOP option. After this you may click FINISH.



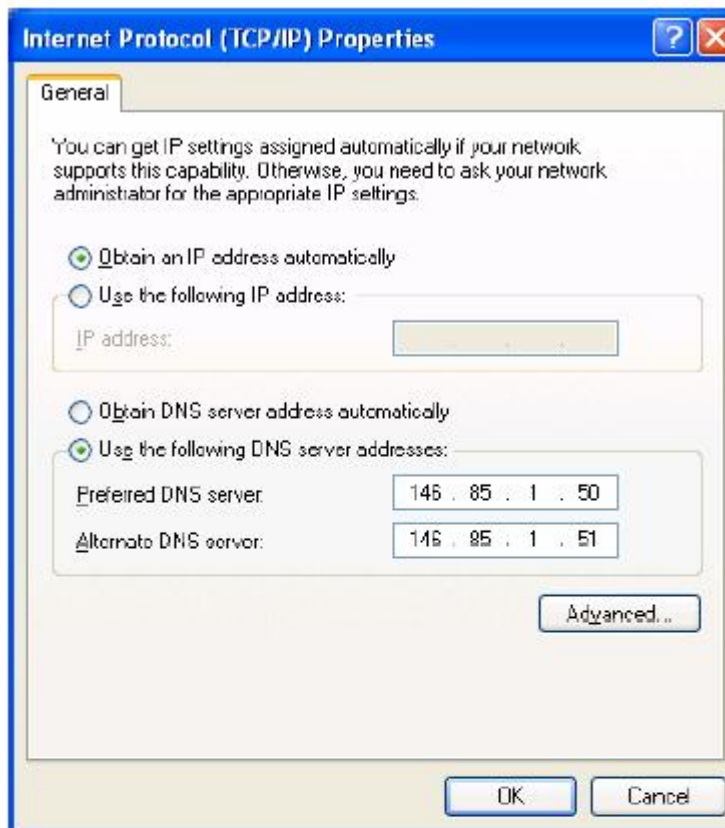
12. The Dial Up connection for SSU will now appear on the screen. The connection is ready to be used at this point; however, we suggest that you follow the next few steps to enter a static DNS. This will ensure that connection will respond correctly regardless of the speed at which your computer connects. The first step in entering a static DNS is to click on PROPERTIES.



13. The Etext Properties dialog box will appear with five tabs. You need to click on the NETWORKING tab.



14. On the Networking tab you should make sure the type of dial-up server is PPP: Windows 95/98/NT 4/2000, Internet and that the Internet Protocol (TCP/IP) box is checked. Next click on the PROPERTIES. When the Internet Protocol (TCP/IP) Properties box opens the Preferred DNS Server and Alternate DNS Server will be blank. Click the radial button in front of USER THE FOLLOWING DNS SERVER ADDRESSES then enter the numbers found on the figure below.



15. Click OK until you return to the following screen.



User name:

Password:

Save this user name and password for the following users:

Me only

Anyone who uses this computer

Dial:

Your computer is now ready to connect. For technical support please call 1-800-421-0731.